



Key Highlights

2018-19

THE YEAR IN REVIEW
FROM THE NATIONAL EMPLOYMENT SERVICES ASSOCIATION

#weR4jobs
weR4everyone

Vision

OPPORTUNITY FOR ALL THROUGH EMPLOYMENT AND INCLUSION

EMPLOYMENT MATTERS

Unemployment can affect anyone, at any time.

Unemployment has wide ranging impact on individuals, families, the wider community and our economy.

Work not only provides income for basic needs such as food, clothing and shelter, it also provides purpose and social inclusion. The longer people are unemployed, their prospects of finding work diminish and so do their resources, further limiting opportunities.

The mission of Australian employment services, and of NESAs as the peak body for the sector, is to break the cycle of unemployment and enable people to be fully included in the social and economic life of the community. The work carried out by our dedicated members in the employment services sector is challenging – but the human rewards are great. Our members support individuals with complex barriers and needs to enable them to secure employment. Providers of employment services and their frontline employment consultants know that their efforts count, not just to individual clients, but to families, society as a whole and the Australian economy.

We are online!

**TO VIEW OUR COMPLETE ANNUAL REPORT
ONLINE, PLEASE VISIT:**



annualreport2019.nesa.com.au

Employment matters.

Unemployment can affect anyone, at any time.

**Our members are dedicated to creating opportunity
for all through employment and inclusion.**

Voice

INFLUENTIAL REPRESENTATION AND ADVOCACY

THIS YEAR, NESA:

- ▶ Made **7 formal submissions** to Government
- ▶ Appeared before **6 Government inquiry committees**
- ▶ Sat on **18 advisory bodies and working groups**
- ▶ Responded to **13 discussion and industry papers**
- ▶ Presented at **2 international symposia**
- ▶ **Delivered a range of provider forums** to consult with and support members. These policy forums and Special Interest Groups (SIGS) included:
 - jobactive Taskforce
 - DES Taskforce
 - IT Reference and Reports Working Group
 - CDP Special Interest Group
- ▶ Kept the sector informed through our **6 regular targeted newsletters and bulletins**
- ▶ Conducted the **9th Remuneration and Workforce Development Survey**.

Recognising excellence

WE ACKNOWLEDGED EXCELLENCE IN THE SECTOR WITH OUR ANNUAL NESA AWARDS FOR EXCELLENCE



Josephine Willcox

Nominated by *My Pathway*

ACHIEVER OF THE YEAR

Supported by the *Department of Employment, Skills, Small and Family Business*



Deidre Hindmarsh

Nominated by *Sureway Employment and Training*

EMPLOYMENT CONSULTANT OF THE YEAR

Supported by *NESA*



Tradco

Nominated by *The Royal Society of the Blind*

INNOVATION IN DISABILITY EMPLOYMENT - TEAM

Supported by the *Department of Social Services*



Latitude

Nominated by *atWork Australia*

CHAMPION EMPLOYER OF THE YEAR

Supported by the *Department of Employment, Skills, Small and Family Business*



PeoplePlus, Team Maroubra

Nominated by *PeoplePlus*

INNOVATION IN INDIGENOUS EMPLOYMENT

Supported by the *Department of Employment, Skills, Small and Family Business*



Sodexo, SM TAFE and atWork Australia

Nominated by *atWork Australia*

EXCELLENCE IN COLLABORATION

Supported by *Sunsuper*

Support

EFFECTIVE MEMBER SUPPORT AND CAPACITY DEVELOPMENT

NESA PROFESSIONAL DEVELOPMENT

Our Professional Development team collaborates with expert trainers to offer webinars, workshops and coaching programs as part of our commitment to the continuing professionalisation of the sector.

NESA CONSULTING

NESA Consulting services have continued to provide professional support across the employment services sector.

SUPPORTING REMOTE AUSTRALIA

NESA Solutions has:

- ▶ Continued to deliver the **Remote School Attendance Strategy** Training across remote Australia equipping the RSAS workforce with valuable skills to increase school attendance.
- ▶ Continued to deliver the critically important training of **Aboriginal and Torres Strait Islander Mental Health First Aid (AMHFA)** across remote Australia.
- ▶ Been funded by the Ecstra Foundation to develop and implement the **Indigenous Money Health project**. The project is designed to strengthen understanding of Indigenous financial literacy by frontline employment workers and community members across remote and regional Australia.

12

INDUSTRY PARTNERS

Offering tailored services to NESA members.

88

INSPIRATIONAL EVENTS

Throughout the year including:

- ▶ NESA Member Leadership Forums
- ▶ Masterclasses to equip sector leaders with necessary skills and understanding of Digital Impact and Leadership
- ▶ NESA's 5th International Women's Day Luncheon
- ▶ The NESA National Conference
- ▶ Professional development events.

NATIONAL EMPLOYMENT SERVICES ASSOCIATION LTD

ACN 079 065 428 / ABN: 69 079 065 428

MELBOURNE OFFICE

Level 2, 20-22 Albert Road
South Melbourne VIC 3205 Australia

PHONE +61 3 9624 2300

EMAIL nesa@nesa.com.au

WEBSITE nesa.com.au

SYDNEY OFFICE

Level 1, 33-35 Belmont Street
Sutherland NSW 2232 Australia

PHONE +61 2 9119 3090

 NESALtd

 National Employment Services Association

 @nesa01

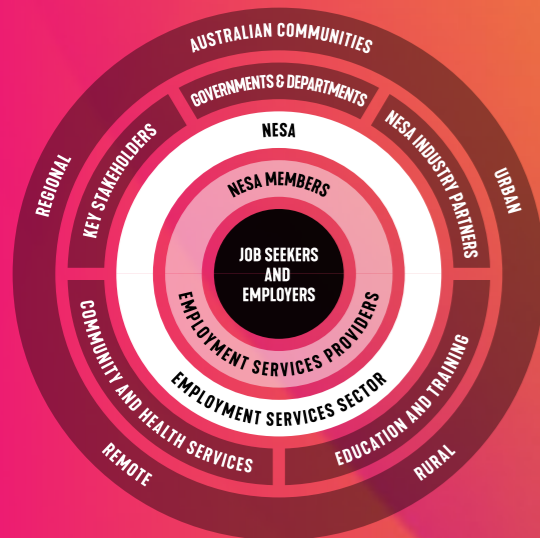

nesa

NESA

IN NUMBERS *2018-19*

#weR4jobs
weR4everyone

EMPLOYMENT SERVICES ECOSYSTEM



EMPLOYMENT SERVICES PROGRAMS



REMOTE CAPACITY BUILDING



NESA SOLUTIONS PROJECT LOCATIONS



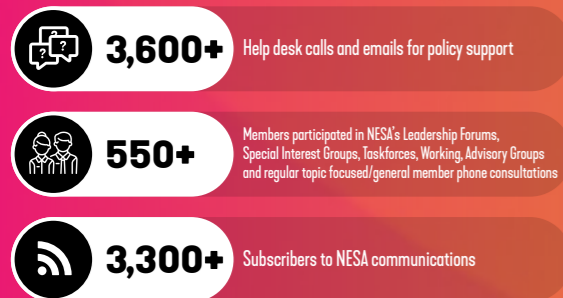
NESA MEMBERS JOBACTIVE, DISABILITY EMPLOYMENT SERVICES (DES) AND COMPLEMENTARY PROGRAMS COVERAGE



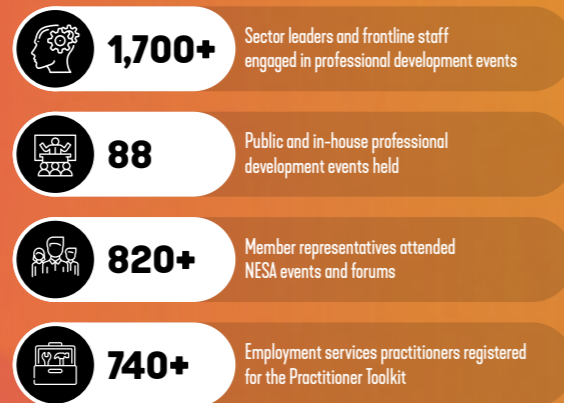
NESA MEMBERS COMMUNITY DEVELOPMENT PROGRAM (CDP) PRESENCE



POLICY SUPPORT



SECTOR CAPACITY BUILDING



+61 3 9624 2300 | nesa.com.au